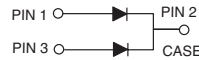
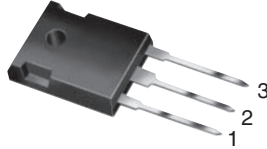


Dual High-Voltage Trench MOS Barrier Schottky Rectifier

 Ultra Low $V_F = 0.372$ V at $I_F = 5$ A

TO-247AD (TO-3P)


FEATURES

- Trench MOS Schottky Technology
- Low forward voltage drop, low power losses
- High efficiency operation
- Low thermal resistance
- Solder Dip 260 °C, 40 seconds
- Component in accordance to RoHS 2002/95/EC and WEEE 2002/96/EC


TYPICAL APPLICATIONS

For use in high frequency inverters, switching power supplies, freewheeling diodes, Oring diode, dc-to-dc converters and reverse battery protection.

MECHANICAL DATA
Case: TO-247AD (TO-3P)

Epoxy meets UL 94V-0 flammability rating

Terminals: Matte tin plated leads, solderable per J-STD-002B and JESD22-B102D

E3 suffix for commercial grade

Polarity: As marked

Mounting Torque: 10 in-lbs Maximum

MAJOR RATINGS AND CHARACTERISTICS	
$I_{F(AV)}$	2 x 20 A
V_{RRM}	100 V
I_{FSM}	300 A
V_F at $I_F = 20$ A	0.60 V
T_J max.	150 °C

MAXIMUM RATINGS ($T_A = 25$ °C unless otherwise noted)			
PARAMETER	SYMBOL	V40100P	UNIT
Maximum repetitive peak reverse voltage	V_{RRM}	100	V
Maximum average forward rectified current (see Fig. 1) per device per leg	$I_{F(AV)}$	40 20	A
Peak forward surge current 8.3 ms single half sine-wave superimposed on rated load per leg	I_{FSM}	300	A
Peak repetitive reverse current per leg at $t_p = 2$ μ s, 1 kHz	I_{RRM}	1.0	A
Voltage rate of change (rated V_R)	dv/dt	10000	V
Operating junction and storage temperature range	T_J, T_{STG}	- 20 to + 150	°C

ELECTRICAL CHARACTERISTICS ($T_A = 25$ °C unless otherwise noted)					
PARAMETER	TEST CONDITIONS	SYMBOL	TYP.	MAX.	UNIT
Breakdown voltage	at $I_R = 1.0$ mA $T_J = 25$ °C	$V_{(BR)}$	100 (minimum)	-	V
Instantaneous forward voltage ⁽¹⁾ per leg	at $I_F = 5$ A $I_F = 10$ A $I_F = 20$ A $T_J = 25$ °C	V_F	0.461 0.525 0.652	- - 0.73	V
	at $I_F = 5$ A $I_F = 10$ A $I_F = 20$ A $T_J = 125$ °C		0.372 0.443 0.595	- - 0.67	

ELECTRICAL CHARACTERISTICS ($T_A = 25\text{ }^\circ\text{C}$ unless otherwise noted)					
PARAMETER	TEST CONDITIONS	SYMBOL	TYP.	MAX.	UNIT
Reverse current at rated V_{RM} (1) per leg	at $V_R = 70\text{ V}$	I_R	$T_J = 25\text{ }^\circ\text{C}$ 11.5	500	μA
			$T_J = 125\text{ }^\circ\text{C}$ 8.0	15	mA
	at $V_R = 100\text{ V}$		$T_J = 25\text{ }^\circ\text{C}$ 60.6	1000	μA
			$T_J = 125\text{ }^\circ\text{C}$ 20.2	45	mA

Note:

(1) Pulse test: 300 μs pulse width, 1 % duty cycle

THERMAL CHARACTERISTICS ($T_A = 25\text{ }^\circ\text{C}$ unless otherwise noted)			
PARAMETER	SYMBOL	V40100P	UNIT
Typical thermal resistance per leg	$R_{\theta JC}$	1.5	$^\circ\text{C/W}$

ORDERING INFORMATION				
PREFERRED P/N	UNIT WEIGHT (g)	PREFERRED PACKAGE CODE	BASE QUANTITY	DELIVERY MODE
V40100P-E3/45	6.056	45	30/Tube	Tube

RATINGS AND CHARACTERISTICS CURVES

($T_A = 25\text{ }^\circ\text{C}$ unless otherwise noted)

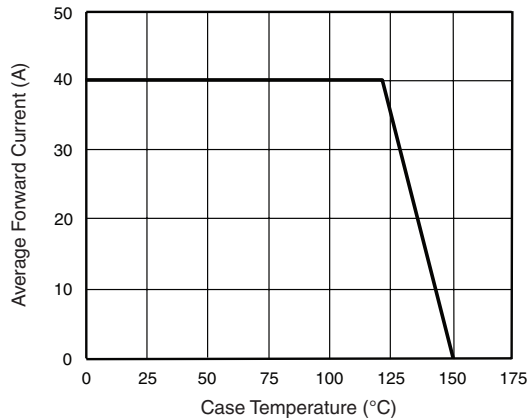


Figure 1. Forward Current Derating Curve

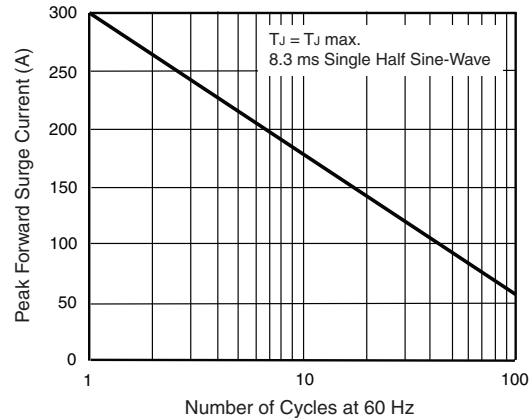


Figure 2. Maximum Non-Repetitive Peak Forward Surge Current Per Leg

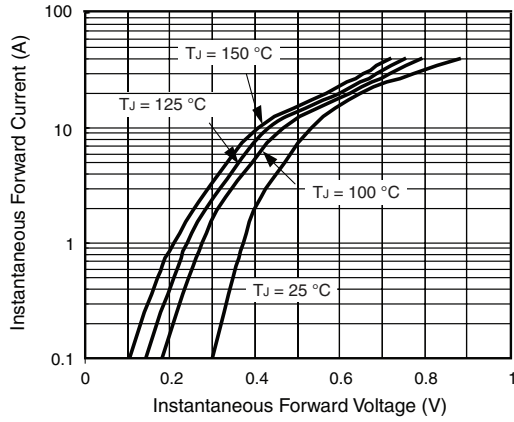


Figure 3. Typical Instantaneous Forward Characteristics Per Leg

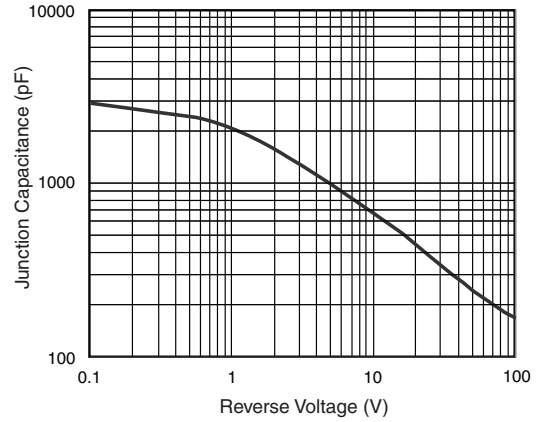


Figure 5. Typical Junction Capacitance Per Leg

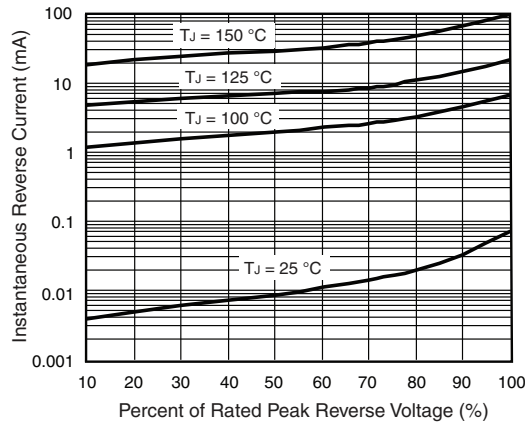


Figure 4. Typical Reverse Characteristics Per Leg

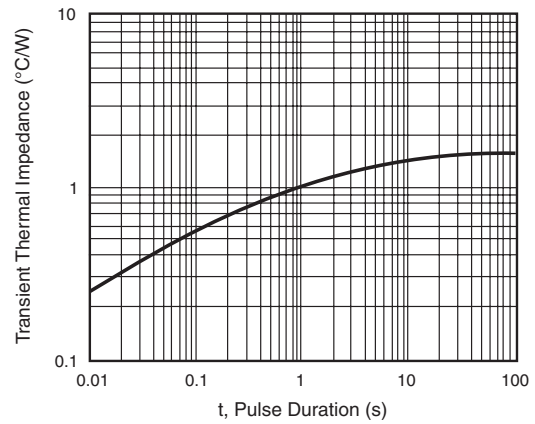
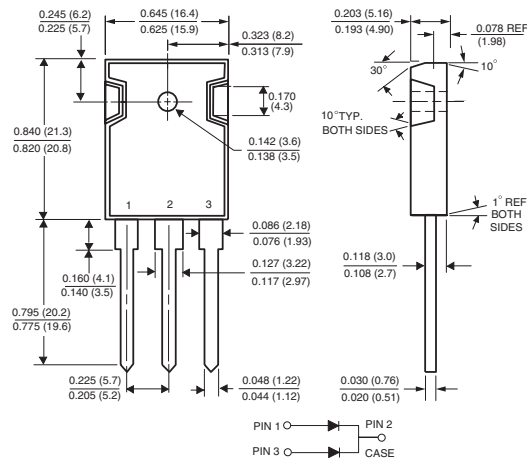


Figure 6. Typical Transient Thermal Impedance Per Leg

PACKAGE OUTLINE DIMENSIONS in inches (millimeters)

TO-247AD (TO-3P)




Notice

Specifications of the products displayed herein are subject to change without notice. Vishay Intertechnology, Inc., or anyone on its behalf, assumes no responsibility or liability for any errors or inaccuracies.

Information contained herein is intended to provide a product description only. No license, express or implied, by estoppel or otherwise, to any intellectual property rights is granted by this document. Except as provided in Vishay's terms and conditions of sale for such products, Vishay assumes no liability whatsoever, and disclaims any express or implied warranty, relating to sale and/or use of Vishay products including liability or warranties relating to fitness for a particular purpose, merchantability, or infringement of any patent, copyright, or other intellectual property right.

The products shown herein are not designed for use in medical, life-saving, or life-sustaining applications. Customers using or selling these products for use in such applications do so at their own risk and agree to fully indemnify Vishay for any damages resulting from such improper use or sale.